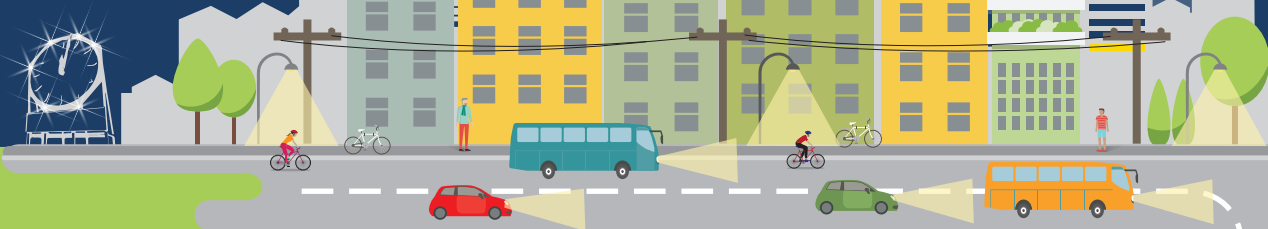


JERSEY CITY MAKE IT GREEN Energy

Jersey City is focusing on making smart energy choices that save money and reduce our impact on the environment. Learn more at www.jcmakeitgreen.org



ENERGY & CARBON

How do our energy choices affect the climate?

When we use **Fossil Fuels** to provide for our energy needs we release carbon dioxide emissions

Carbon Dioxide

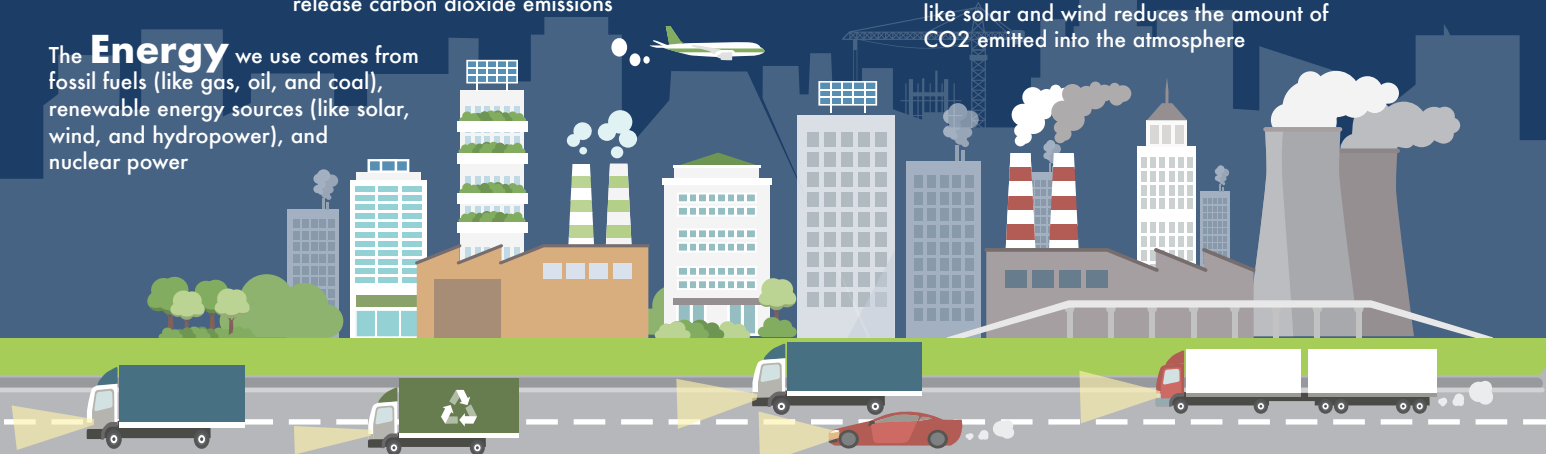
(CO₂) is the primary Greenhouse Gas (GHG) that contributes to the increase of extreme weather patterns and global warming

Using Less Energy

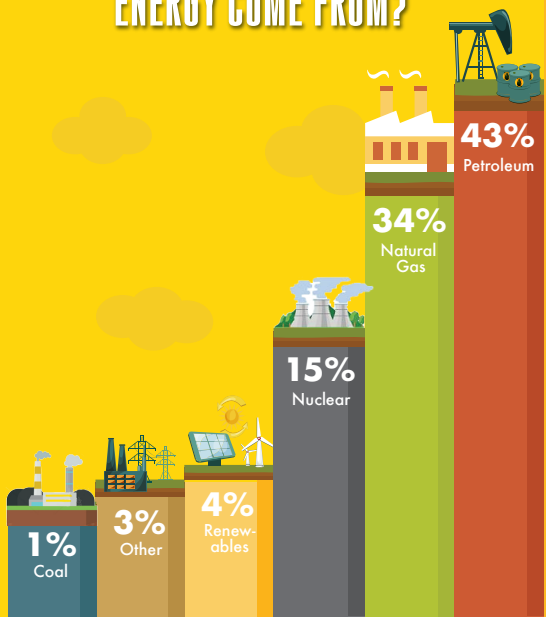
and becoming more energy efficient reduces the money you pay for energy and also reduces CO₂ emissions

The **Energy** we use comes from fossil fuels (like gas, oil, and coal), renewable energy sources (like solar, wind, and hydropower), and nuclear power

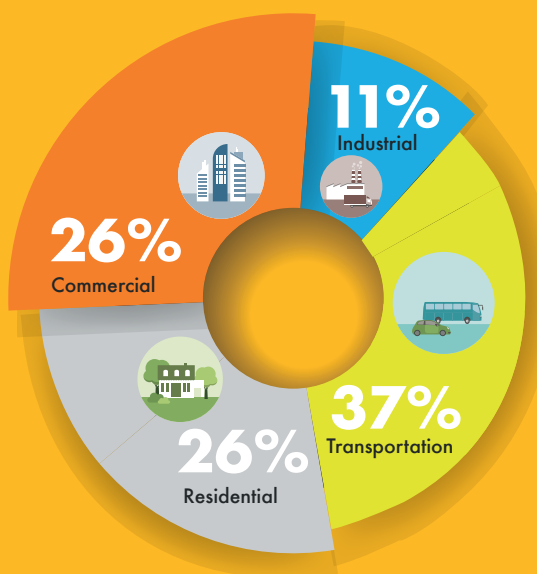
Switching to **"clean"** energy sources like solar and wind reduces the amount of CO₂ emitted into the atmosphere



WHERE DOES NEW JERSEY'S ENERGY COME FROM?

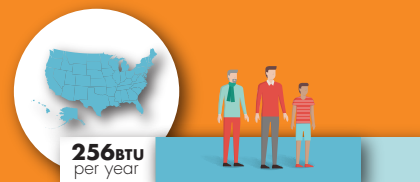


ENERGY IN NEW JERSEY



TOTAL ENERGY CONSUMED PER CAPITA, MILLION BTU

Average energy consumption and costs in NJ are among the highest in the nation.



WHAT CAN WE DO?

YOUR HOME

Small changes in your home can add up to significant energy savings

Select a renewable energy electricity provider or generate your own

Save 5-30% on your energy bill by making efficiency upgrades

During the summer, a green roof can reduce the daily energy demand for cooling in a 1-story building by 75%

In winter and in summer, adjust the thermostat up or down 8 degrees when leaving your home and save 10% on your energy bill

You can save over \$200/year by washing your clothes in cold water

Replace incandescent bulbs with LEDs

Plugged-in appliances and electronics consume energy even when they're turned off - try managing them with a powerstrip

Run only full loads in your dishwasher and skip the heated dry cycle

LED bulbs
LEDs typically use 75%-80% less energy than traditional incandescents and last 25 times longer

CFL bulbs
CFLs typically use 75% less energy than traditional incandescents and last 10 times longer

Incandescent bulbs
Incandescents only last 1,000-2,000 hours on average (41-83 days) and convert only 5% of the energy into light

YOUR TRANSPORTATION CHOICES

The way you get around has a major impact on the environment. The good news? Many Jersey City residents are already walking and taking public transit.



A **single person** switching from a personal car to public transportation can reduce their household CO2 emissions by 4,800 pounds per year

An **electric vehicle** in NJ generates 79% less CO2 than a conventional vehicle

A **fully occupied bus** is six times more fuel efficient than a car carrying one person



Households that use public transportation save an average of more than \$8,000 every year

47% of Jersey City residents use public transportation as their primary commuting mode

8% of Jersey City residents walk to work

